



Tool Instruction

SMALL QUICK CONNECT REPAIR KIT

4328408R1

Tool Number: KL20020-1-RK

Purpose


Repair kit for KL20020-1 Small Quick Connect included in KL20030NAV and KL20050NAV Tool Kits


Application(s)

KL20030NAV EGR Leak Detection Kit

KL20050NAV EGR Leak Detection Kit 2007 – 2009 MaxxForce® DT, 9 & 10

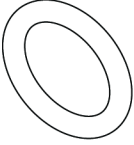
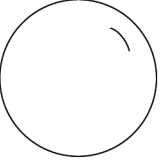
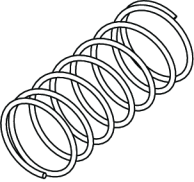


 **WARNING:** To prevent property damage, personal injury, and / or death, read all safety instructions in the “Safety Information” section of the *Engine Service Manual* or *Engine Diagnostic Manual*.

 **WARNING:** To prevent property damage, personal injury, and / or death, park vehicle on hard flat surface, turn the engine off, set the parking brake, and install wheel chocks to prevent the vehicle from moving in either direction.

 **WARNING:** To prevent personal injury and / or death, always wear safe eye protection when performing vehicle maintenance.

Tool Contents

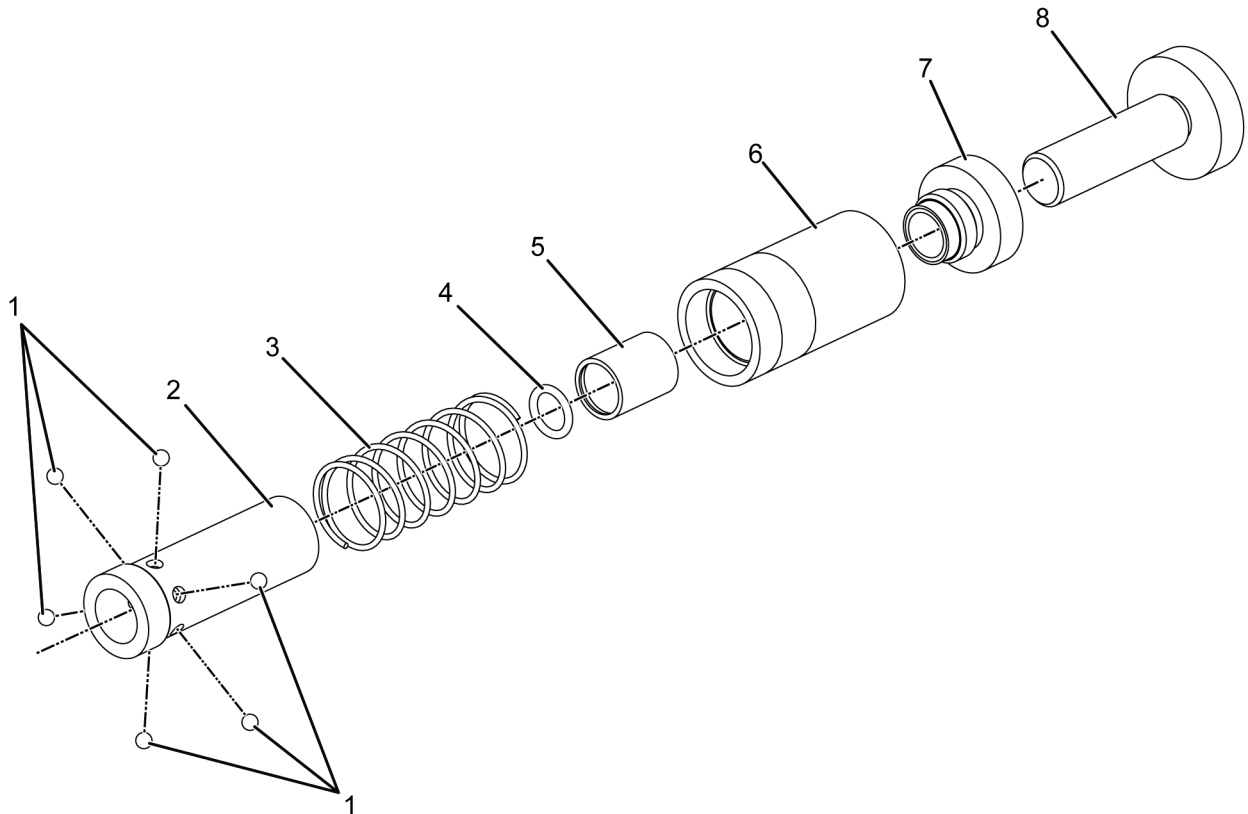
Table 1

Image	Tool Number	Qty	Description
 <p>0000405666</p>	KL20020-1-GK	2	O-Ring (Includes 1 Spare for Future Use)
 <p>0000405664</p>	KL20020-1-7-GK	6	Ball Bearings
 <p>0000405665</p>	KL20020-1-8	1	Compression Spring
 <p>0000405662</p>	45NA53	1	Multi-Purpose Grease Packet 1 cc, Super Lube
 <p>0000160075</p>	4328408R1	1	Tool Instruction

Instructions

DISASSEMBLY

NOTE: Please reference International® Service PortalSM regarding any possible revisions to this document.



0000405663

Figure 1. KL20020-1 Small Quick Connect Components

- | | | |
|-----------------------|-------------------|-----------------|
| 1. Ball bearing (6) | 4. O-ring | 7. Cap |
| 2. Bearing housing | 5. O-ring housing | 8. Knurled knob |
| 3. Compression spring | 6. Collar | |

DISASSEMBLY

1. Loosen knurled knob (Figure 1, Item 8) fully and remove.

CAUTION: To prevent component damage, take care not to over-tighten vise. Damage can occur to the bearing housing surface.

2. Compress collar (Figure 1, Item 6) to expose end of bearing housing (Figure 1, Item 2). When compressed, secure exposed bearing housing in a soft-jaw vise to secure.

NOTE: When removing cap, hold cap securely. A small amount of spring tension is present in the assembly.

Instructions (cont.)

3. Loosen cap (Figure 1, Item 7) fully and remove.
4. Remove spring (Figure 1, Item 3) and discard.

NOTE: When removing collar, ball bearings are exposed and may fall out.

5. Slide collar (Figure 1, Item 6) off.

NOTE: Do not insert screwdriver into the threaded end of housing.

6. Insert small screwdriver, into outer opening of bearing housing (Figure 1, Item 2). Push slightly to disengage O-ring housing (Figure 1, Item 5).
7. Remove bearing housing from vise. Remove ball bearings (Figure 1, Item 1) and discard.
8. Remove O-ring (Figure 1, Item 4) and discard.
9. Clean all components for reassembly.

ASSEMBLY

1. Install kit-supplied O-ring (Figure 1, Item 4) into O-ring housing (Figure 1, Item 5).
2. Apply a small amount of kit-supplied lubricant to O-ring
3. Apply a small amount of kit-supplied lubricant into six bearing retainer holes located on bearing housing.
4. Install ball bearings (Figure 1, Item 1) into ball bearing housing (Figure 1, Item 2).

NOTE: Knurled end of collar must cover ball bearings.

5. Slide collar (Figure 1, Item 6) onto bearing housing.
6. Install O-ring housing into threaded opening of bearing housing.
7. Install kit-supplied spring (Figure 1, Item 3).
8. Install cap (Figure 1, Item 7) and tighten securely.
9. Install knurled knob (Figure 1, Item 8).

Contact Information

If you would like to order additional tools or need replacement parts, please refer to the Navistar Service Tool Catalog. If you have questions, concerns, or feedback, please contact Navistar Service Tool Support Center:

- Submit a Service Tool iKNOW Case File.
- Phone: 800-365-0088 (toll free).