

## Tool Instruction Crankshaft Front Oil Seal Installer

4328602R1

---

Tool Number: J-44645



0000433297

**Figure 1. J-44645 — Crankshaft Front Oil Seal Installer**

### **Purpose**

An essential tool utilized to assist with installation of the crankshaft front oil seal installer.

### **Application(s)**

International<sup>®</sup> 6.6 Engine

Additional Vehicle / Engine Applications May Apply

## Application(s) (cont.)



**GOVERNMENT REGULATION:** Engine fluids (oil, fuel, and coolant) may be a hazard to human health and the environment. Handle all fluids and other contaminated materials (such as filters or rags) in accordance with applicable regulations. Recycle or dispose of engine fluids, filters, and other contaminated materials according to applicable regulations.



**WARNING:** To prevent personal injury and / or death, read all safety instructions in the “Safety Information” section of the *Engine Service Manual* or *Engine Diagnostic Manual*.



**WARNING:** To prevent property damage, personal injury, and / or death, park vehicle on hard flat surface, turn the engine off, set the parking brake, and install wheel chocks to prevent the vehicle from moving in either direction.





**WARNING:** To prevent personal injury and / or death, always wear safe eye protection when performing vehicle maintenance.



**WARNING:** To prevent property damage, personal injury, and / or death, inspect tool for wear / damage prior to use. Replace any worn or damaged components as necessary.

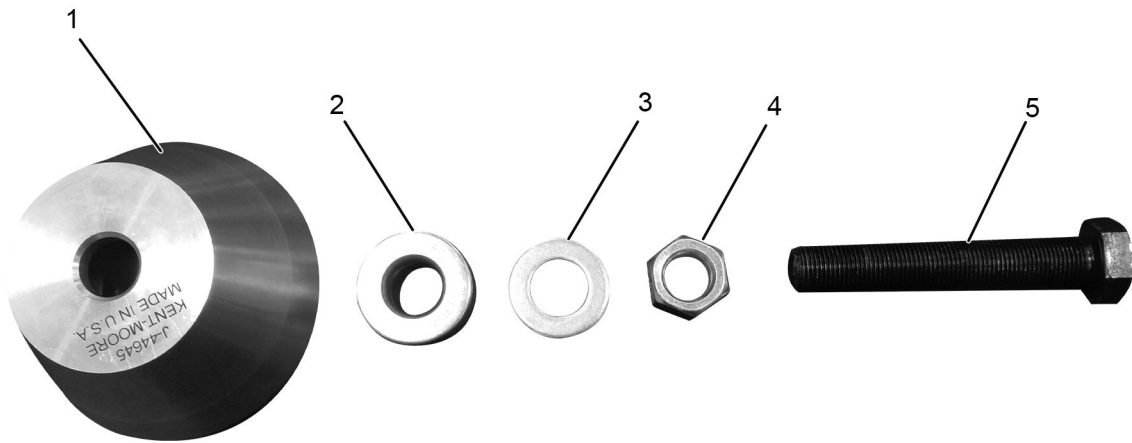
## Tool Contents

Table 1

Image	Tool Number	Qty	Description
 <p>0000433299</p>	J-44645	1	Crankshaft Front Oil Seal Installer
 <p>0000160075</p>	4328602R1	1	Tool Instruction

# Instructions

## Tool Assembly

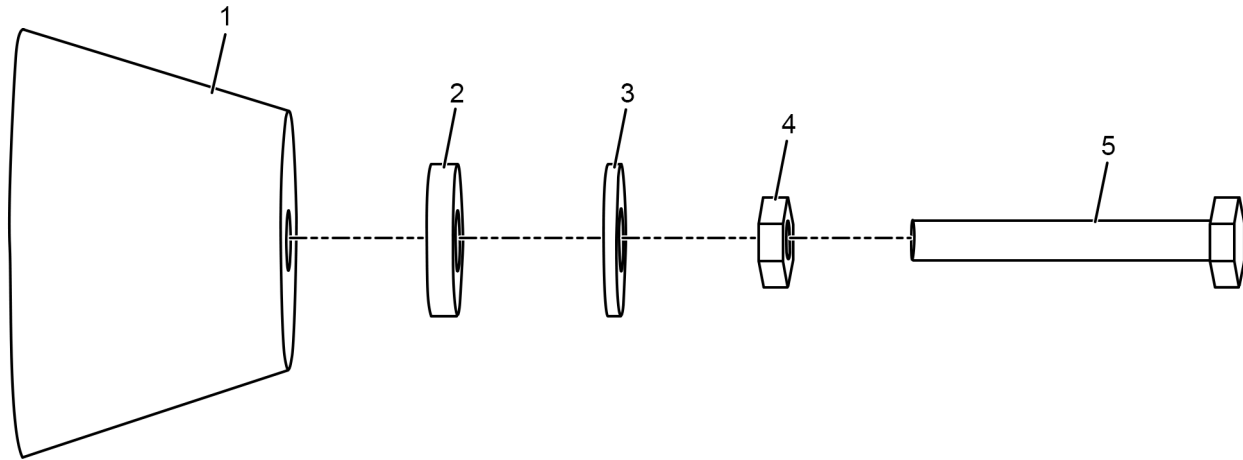


0000433296

**Figure 2. Crank Shaft Oil Sealer Components**

- |            |           |         |
|------------|-----------|---------|
| 1. Shell   | 3. Washer | 5. Bolt |
| 2. Bearing | 4. Nut    |         |

## Instructions (cont.)



0000432184

**Figure 3. Crankshaft Oil Sealer Assembly**

- |            |           |         |
|------------|-----------|---------|
| 1. Shell   | 3. Washer | 5. Bolt |
| 2. Bearing | 4. Nut    |         |

### Tool Use

**NOTE: Please reference International® Service Portal<sup>SM</sup> regarding any possible revisions to this document.**

1. Park vehicle on a flat surface.
2. Shift transmission into Park or Neutral and set parking brake.
3. Turn ignition to Key OFF position.
4. Install wheel chocks.
5. Locate and access crankshaft front oil seal; refer to appropriate Service Manual for detailed instructions.
6. Perform procedure; refer to appropriate Service Manual for detailed instructions.
7. Remove wheel chocks.

### Care and Maintenance

- Keep tools clean and free of contaminants
- Replace any damaged components

### Contact Information

If you would like to order additional tools or need replacement parts, please refer to the Navistar Service Tool Catalog. If you have questions, concerns, or feedback, please contact Navistar Service Tool Support Center:

- Submit a Service Tool iKNOW Case File.
- Phone: 800-365-0088 (toll free).