

Tool Instruction ACM Programming Harness

4328863R1

Tool Number: 12-801-01-18



0000477706

Figure 1. ACM Programming Harness 12-801-01-18

Purpose

Essential tool used to reflash / reprogram the Aftertreatment Control Module (ACM).

Application(s)

2024 International[®] S13 Integrated Powertrain, 2024 International[®] S13 Engine. Additional vehicle applications may apply.

Application(s) (cont.)

⚠ WARNING: To prevent personal injury and / or death, or damage to property, read all safety instructions in the “Safety Information” section of the *Engine Service Manual* or *Engine Diagnostic Manual*.



⚠ WARNING: To prevent personal injury and / or death, or damage to property, park vehicle on hard flat surface, turn the engine off, set the parking brake, and install wheel chocks to prevent the vehicle from moving in either direction.

⚠ WARNING: To prevent personal injury and / or death, always wear safe eye protection when performing vehicle maintenance.

⚠ WARNING: To prevent personal injury and / or death, or damage to property, inspect tool for wear / damage prior to use. Replace any worn or damaged components as necessary.

Tool Contents

Table 1

Image	Tool Number	Qty	Description
 <p>0000477705</p>	12-801-01-18	1	ACM Programming Harness
 <p>0000160075</p>	4328863R1	1	Tool Instruction

Additional Tools Required

When using ACM Programming Harness (12-801-01-18), the following additional tools are required:

- EZ-Tech® with 500K-compatible Interface Device (GREEN adapter)
- Control Module Programming Station (12-801-01-01)
- Service Diagnostic Solutions (SDS) Software

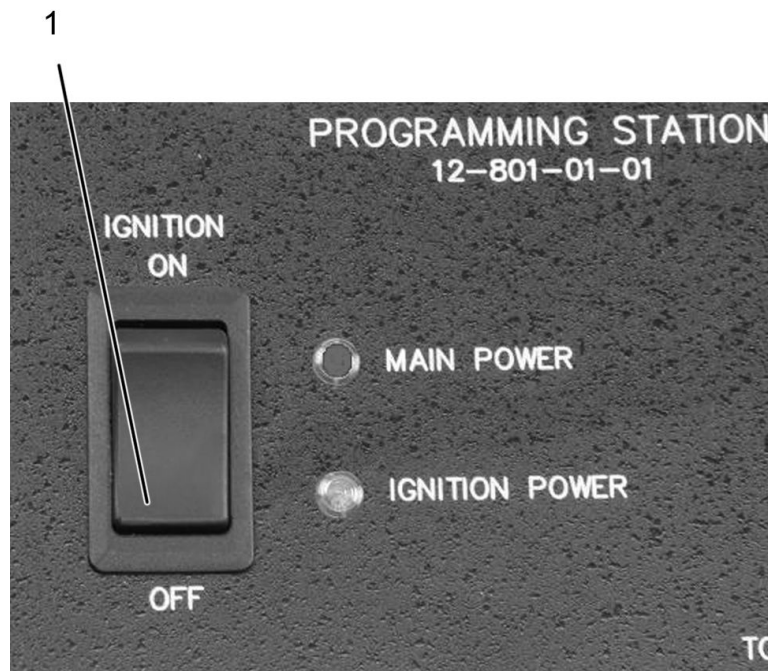
Instructions

NOTE: Please reference International® Service PortalSM regarding any possible revisions to this document.

This procedure is divided into the following main tasks:

- **Set Up Control Module Programming Station: Step 1–Step 5**
- **Update Control Module Programming Station: Step 6**
- **Disconnect Control Module Programming Station: Step 7–Step 13**

Set Up Control Module Programming Station

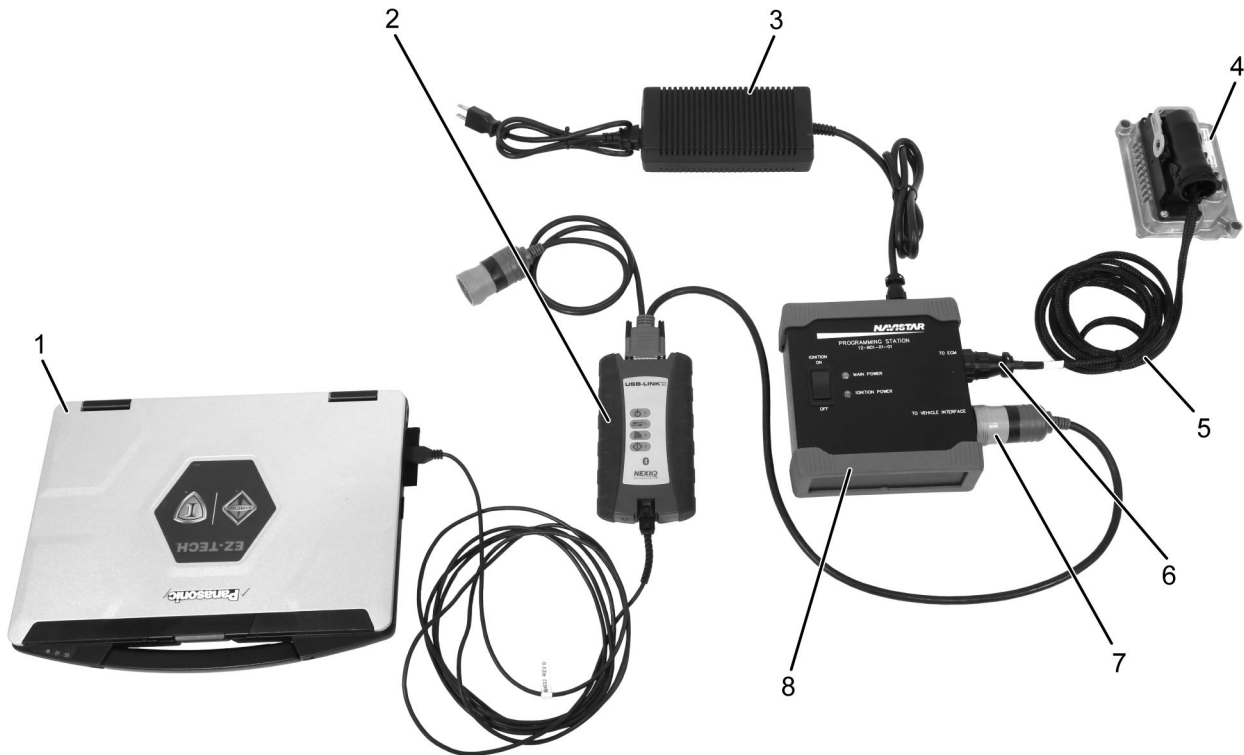


0000047110

Figure 2. Control Module Programming Station Ignition Switch

1. Ignition switch OFF

Instructions (cont.)



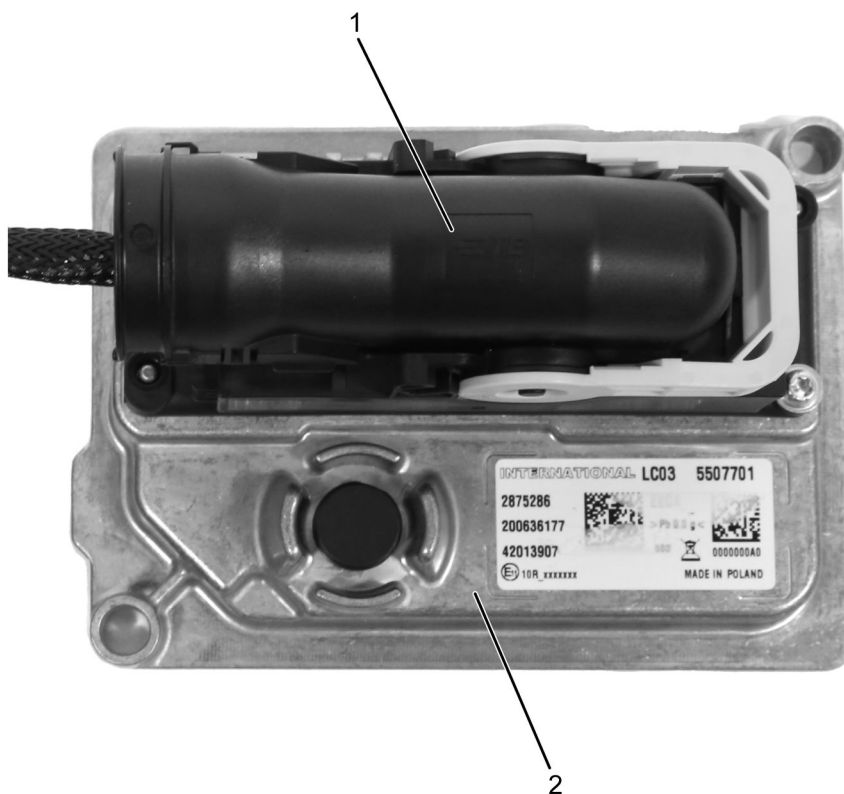
0000477708

Figure 3. Control Module Programming Station Connections

- | | | |
|---|---|---|
| 1. EZ-Tech® | 5. Programming harness
12-801-01-18 | 7. Control module programming
station vehicle interface port |
| 2. Interface device | 6. Control module programming
station ECM port | 8. Control module programming
station (12-801-01-01) |
| 3. 12-volt power supply
(12-801-01-08) | | |
| 4. ACM | | |

1. Press ignition switch (Figure 2, Item 1) on Control Module Programming Station (12-801-01-01) to OFF.
2. Connect Control Module Programming Station (Figure 3, Item 8) using 12-volt power supply (Figure 3, Item 3) to an AC power source.
3. Connect ACM Programming Harness (Figure 3, Item 5) to Control Module Programming Station port labeled TO ECM (Figure 3, Item 6).

Instructions (cont.)

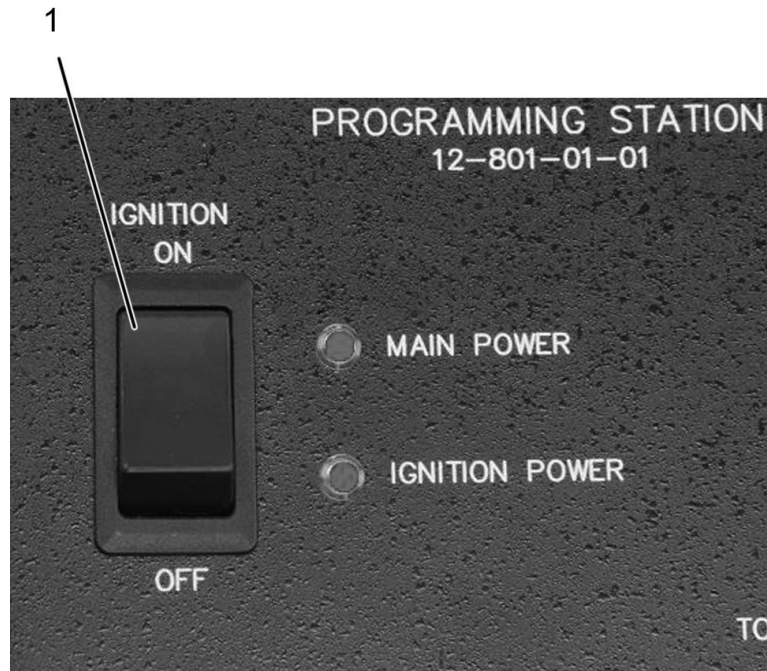


0000477709

Figure 4. ACM Programming Harness Connection to ACM

1. ACM Programming Harness
 2. ACM
4. Connect opposite end of harness (Figure 4, Item 1) to ACM (Figure 4, Item 2).
- NOTE: GREEN adapter is needed for 500K compatibility.**
5. Connect interface device (Figure 3, Item 2) to Control Module Programming Station port labeled TO VEHICLE INTERFACE (Figure 3, Item 7), and to EZ-Tech® (Figure 3, Item 1).

Instructions (cont.)



0000047108

Figure 5. Control Module Programming Station Ignition Switch

1. Ignition switch ON
6. Press ignition switch (Figure 5, Item 1) on Control Module Programming Station (12-801-01-01) to IGNITION ON.

Update Control Module Programming Station

Before updating the module using the Service Diagnostic Solutions (SDS) Software, ensure that all equipment is fully connected.

7. Using SDS, update Control Module Programming Station.

Disconnect Control Module Programming Station

8. After programming is complete, press ignition switch (Figure 2, Item 1) on Control Module Programming Station (12-801-01-01) to IGNITION OFF.
9. Disconnect interface device (Figure 3, Item 2) from EZ-Tech® (Figure 3, Item 1).
10. Disconnect interface device (Figure 3, Item 2) from Control Module Programming Station port labeled TO VEHICLE INTERFACE (Figure 3, Item 7). Store interface device for reuse.
11. Disconnect ACM Programming Harness (Figure 3, Item 5) from control module (Figure 3, Item 4).
12. Install ACM, if removed from vehicle (refer to appropriate service manual for detailed instructions).
13. Disconnect ACM Programming Harness (Figure 3, Item 5) from Control Module Programming Station port labeled TO ECM (Figure 3, Item 6). Store ACM Programming Harness (Figure 3, Item 5) for reuse.

Instructions (cont.)

14. Disconnect Control Module Programming Station (Figure 3, Item 8) from power source (Figure 3, Item 3).

Care and Maintenance

- Keep tools clean and free of contaminants.
- Replace any damaged components.

Contact Information

If you would like to order additional tools or need replacement parts, please refer to the Navistar Service Tool Catalog. If you have questions, concerns, or feedback, please contact Navistar Service Tool Support Center:

- Submit a Service Tool iKNow Case File.
- Phone: 800-365-0088 (toll free).