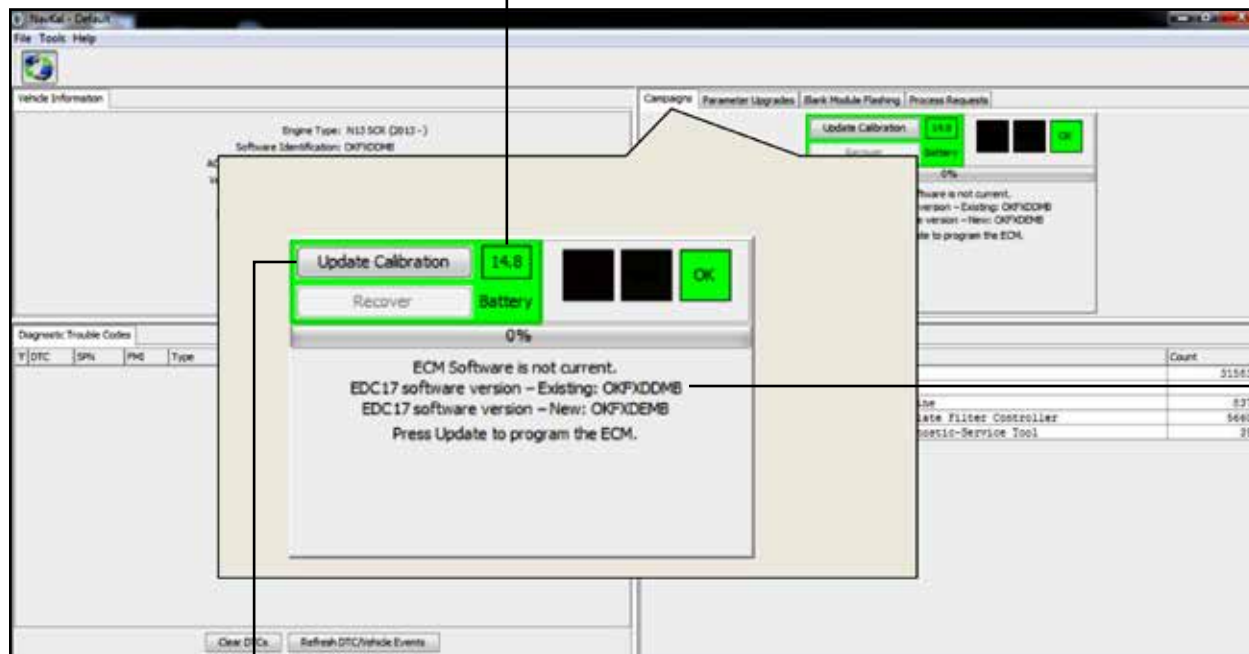


SECTION 1 | CONNECTING TO A VEHICLE AND UPDATING CALIBRATION VERSION

1 If calibration update is available, existing and new calibration will be displayed.

2 Battery voltage must be at least 12.5+ volts to begin programming. NavKal will display highlighted voltage:

RED	9.0 - 10.4 Volts
YELLOW	10.5 - 12.4 Volts
GREEN	12.5 Volts or Higher

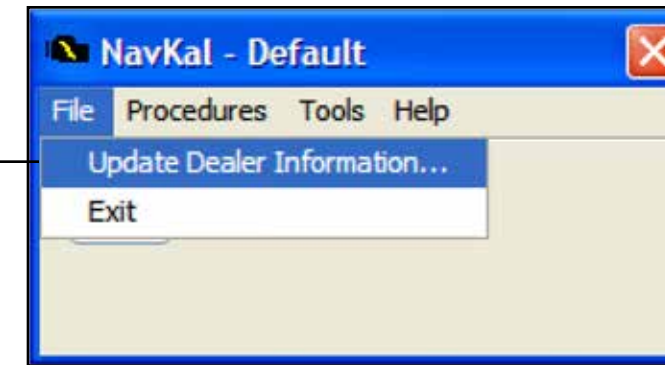


3 To begin updating, select **Update Calibration** and follow highlighted screen prompts for key cycles.

OVERVIEW | SYSTEM REQUIREMENTS / CONNECTING

Minimum System Requirements:

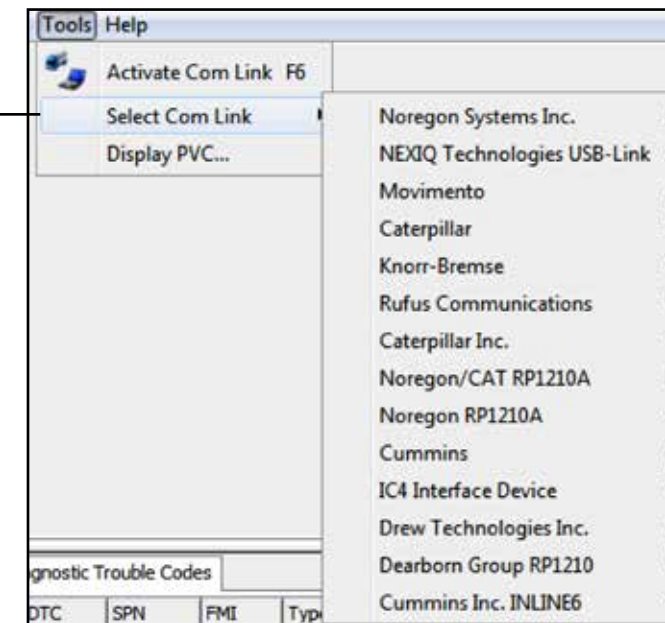
- Windows 7
- 1GHz Intel Core 2 Duo, AMD Athlon X2 or better
- 2GB (32-bit) or 4GB (64-bit) of RAM
- 300MB of available hard disk space
- 1024 x 768 resolution monitor
- One or more RP1210A compatible communication devices with SAE J1708 and/or SAE J1939 support



1 Before using NavKal for the first time, please update your dealer information.

! This step only applies for users at International® / IC Bus™ dealerships.

2 Before connecting to a vehicle, select your diagnostic interface under **Tools / Select Com Link**.



NavKal

Electronic Control Module (ECM) Programming Software

QUICK REFERENCE GUIDE



- Update calibrations offline
- Read and clear engine DTCs
- Create Programming Verification Codes (PVC)
- View On-screen display of vehicle information, including ECM software version and upgrade availability
- Update / change parameters and horsepower (NavKal Pro only)
- Program blank modules (NavKal Pro only)

NavKal

Electronic Control Module (ECM) Programming Software

0000351921 | © 2017 Navistar, Inc. All rights reserved. All marks are trademarks of their respective owners.
www.navistarservicesoftware.com

SECTION 2 | UPDATE/CHANGE PARAMETERS (NavKal Pro ONLY)

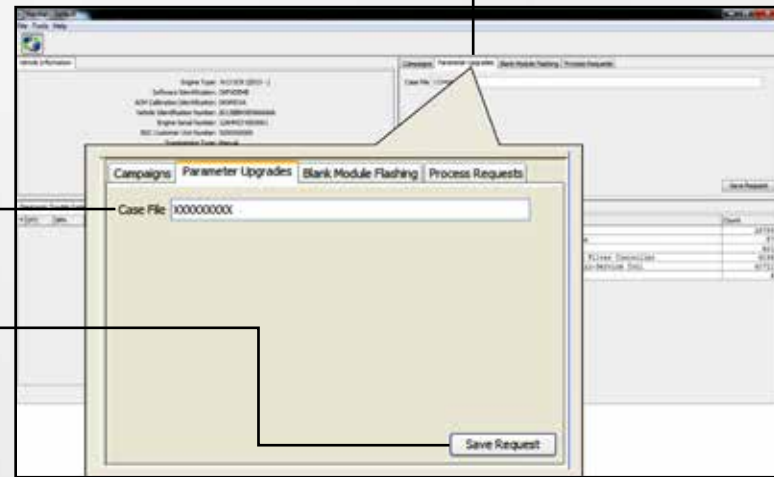
! Non-dealer customers: Please email vehicleprogramming@navistar.com for support updating or changing parameters. Contact your local dealer for support to perform a horsepower upgrade.

1 Select the **Parameter Upgrade** tab and follow highlighted screen prompts for key cycles.

2 Enter associated case file number.

3 Select **Save Request** and follow highlighted screen prompts for key cycles. See Section 4.

4 Return to **Campaigns** tab to complete update.



SECTION 3 | BLANK MODULE FLASHING (NavKal Pro ONLY) [cont.]

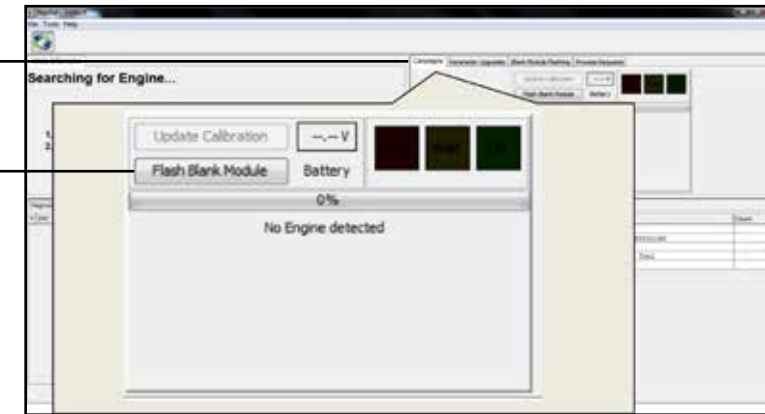
7 After Process Request is complete and status shows downloaded, return to **Campaigns** tab to complete update.

8 Select **Flash Blank Module** and follow highlighted screen prompts for key cycles.



Select VIN.

Follow highlighted screen prompts for key cycles.

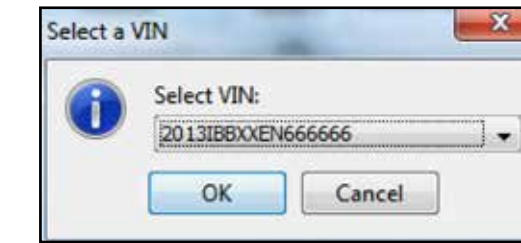


SECTION 5 | RECOVERY

Note: Use only in the event of programming failure.

1 Select **Recover**.

2 Select the associated VIN.



3 Follow screen prompts for key cycles. NavKal screen prompts will become highlighted.

RED Cycle Key OFF
YELLOW Cycle Key ON

SECTION 3 | BLANK MODULE FLASHING (NavKal Pro ONLY)

Note: Blank module flashing should be performed only when replacing a module.

1 Select **Blank Module Flashing** tab and follow highlighted screen prompts for key cycles.

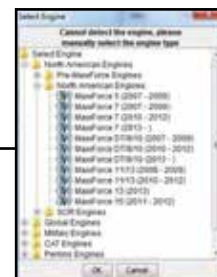
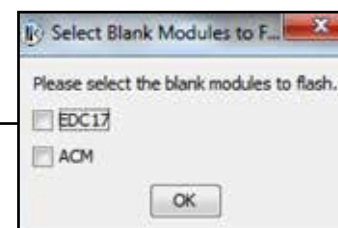
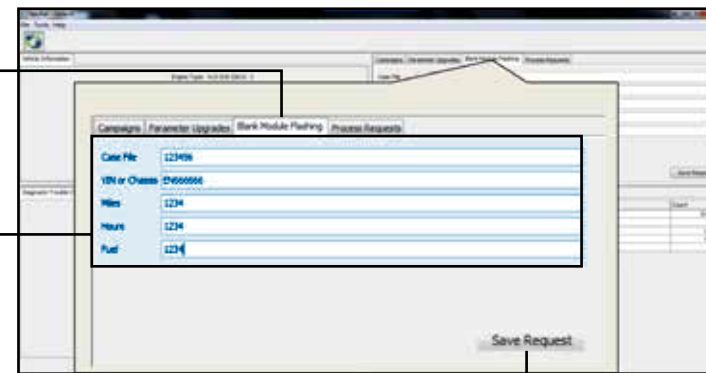
2 If applicable, input associated case file VIN, chassis, miles, hours and fuel.

3 Select **Save Request** and follow highlighted screen prompts for key cycles.

4 Select **Engine Platform**.

5 Select module being replaced.

6 Follow highlighted screen prompts for key cycles. See Section 4.

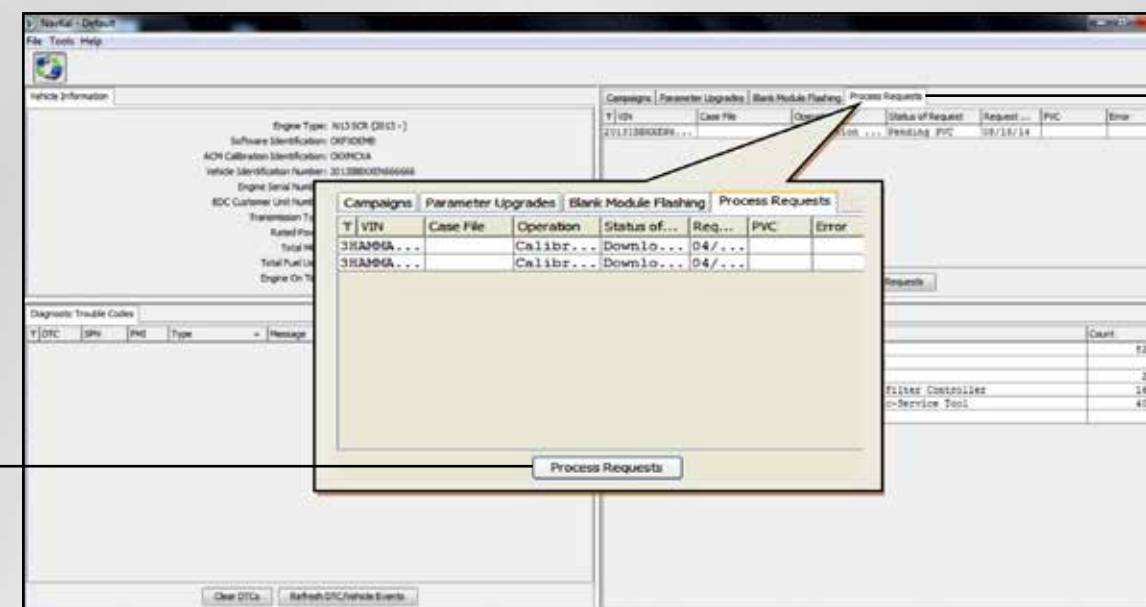


SECTION 4 | PROCESS REQUEST

Note: All pending process requests include blank module flashing, parameter changes, PVC creation and upload history. Request type and status are displayed for each VIN... if applicable.

1 Select **Process Requests** tab and follow highlighted screen prompts for key cycles.

Select **Process Requests** to complete all pending requests.



SECTION 6 | PROGRAMMING VERIFICATION CODE (PVC)

Note: After programming is complete, status will show pending PVC.

1 Select the **Process Requests** tab to send history and create a Programming Verification Code (PVC). A PVC will be generated against the associated VIN number.

2 Select **View PVC** to view or print PVC.

